

BRITAIN IN FACTS AND FIGURES

From population trends to business and economics, education and quality of life

61 > International trade 62-63 > Society 64-65 > Further education

66 > Skills and labour forces mobility 67 > Growth 68 > Wellbeing

69 > People 70 > Household 71 > Public finances 72-73 > Pensions

International trade

Top trading partners

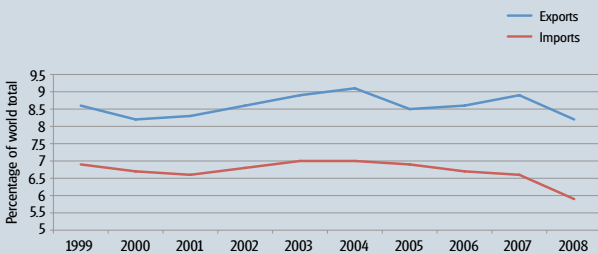
GOODS EXPORTS		GOODS IMPORTS	
1	US	1	Germany
2	Germany	2	US
3	Netherlands	3	China
4	France	4	Netherlands
5	Ireland	5	France

The US was the UK's most important export market in 2009. Germany was the most important source of imports.

Source: Office for National Statistics (ONS) Pink Book



UK share of world trade in services

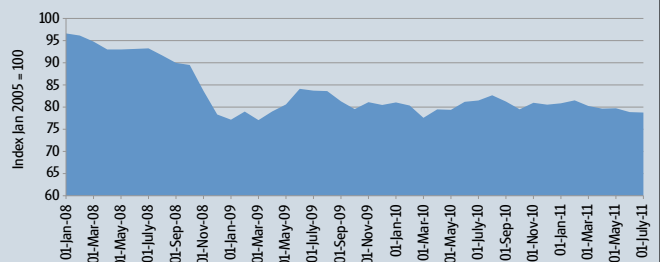


8.2%

The UK accounted for **8.2%** of world exports of services and imported **5.9%** of the world's trade in services in 2008.

Source: ONS Pink Book

Sterling effective exchange rate

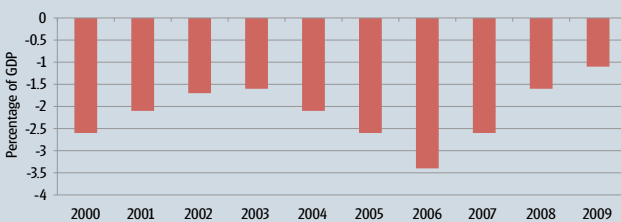


21%

The UK's effective exchange rate has fallen by **21%** since 2005.

Source: Bank of England

Current account balance

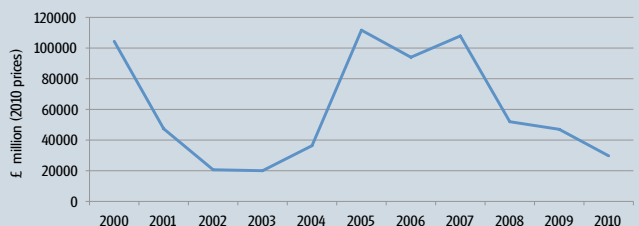


-1.1%

The UK's current account balance shrank to a deficit of **1.1%** of GDP in 2009 compared to a deficit of **3.4%** of GDP in 2006.

Source: ONS Pink Book

Direct investment in the UK



£29bn

Foreign direct investment in the UK was **£29 billion** in 2010 compared with over **£100 billion** in 2007.

Source: ONS Pink Book

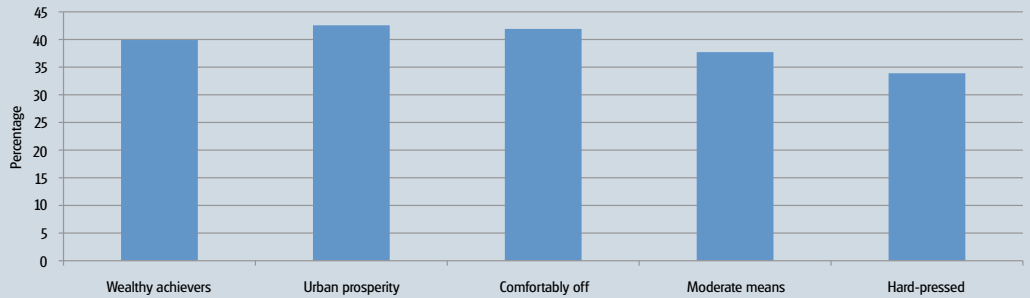
Society

Visiting public libraries

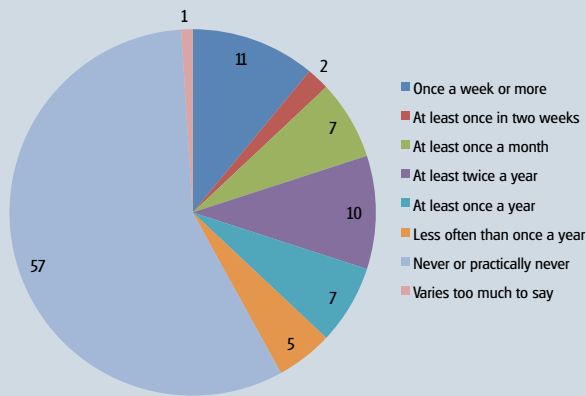
1/3

Just over a third of those from the most deprived socio-economic groups visited a public library in 2009-10 compared to almost 40% of the least deprived group.

Source: Taking Part Survey

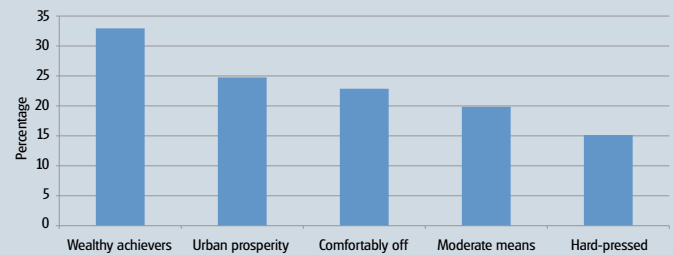


Attendance at church services



57% 57% of those surveyed never or practically never visited a church in 2008.
Source: ONS Social Trends 2010

Volunteering by socio-economic group



33%

33% of those from the least deprived socio-economic groups engaged in some voluntary activity compared to 15% from the most deprived group in 2010. Source: Taking Part Survey

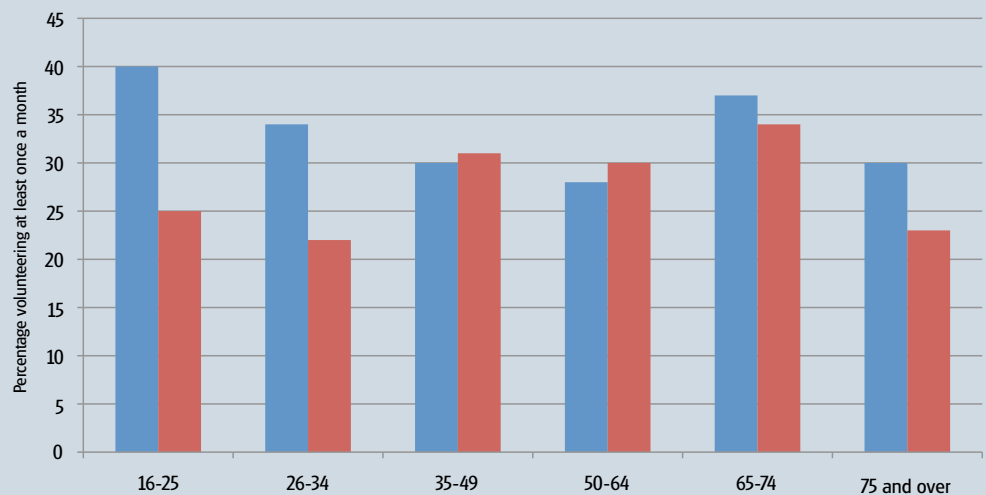
Voluntary activities

- Informal volunteering
- Formal volunteering

40%

Those aged 65-74 were the most likely to participate in formal volunteering in 2009. 40% of those aged 16-25 engaged in some informal volunteering.

Source: Citizenship Survey, Communities and Local Government

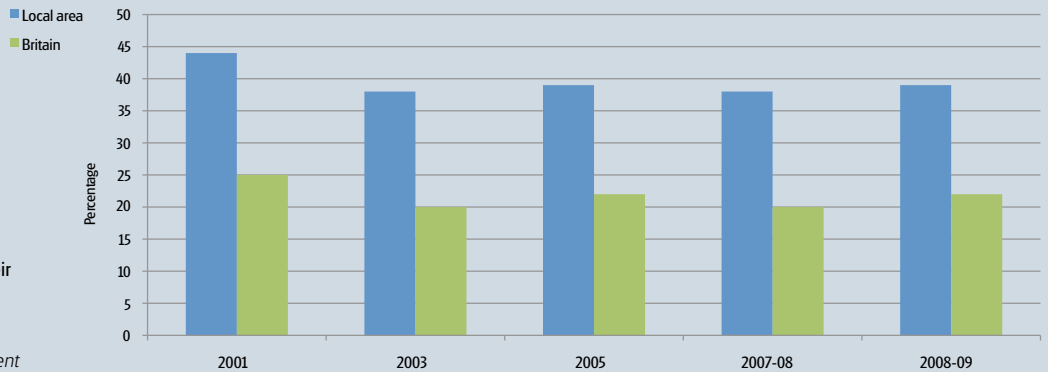


Influencing decisions locally or nationally

39%

The proportion of those who felt able to influence decisions in their local area declined from 44% in 2001 to 39% in 2008-09.

Source: Citizenship Survey, Communities and Local Government



Trust in institutions

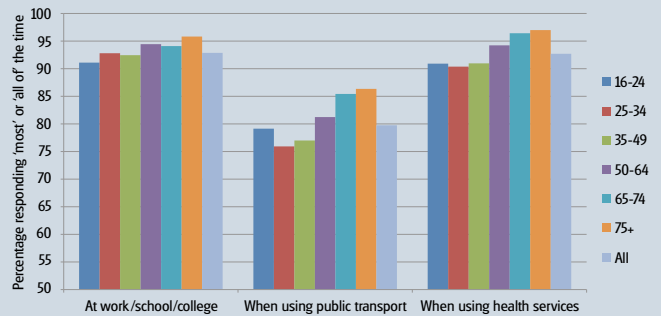


61%

The police are more trusted than Parliament or local councils. Trust in local councils has risen over the past few years from 52% in 2001 to 61% in 2008-09. Trust in Parliament has declined slightly.

Source: Citizenship Survey, Communities and Local Government

Feeling respected



Those aged over 75 were the most likely to feel respected in 2008-09. Respondents thought they were less likely to be treated with respect when using public transport compared to being at work or using health services.

Source: Citizenship Survey, Communities and Local Government

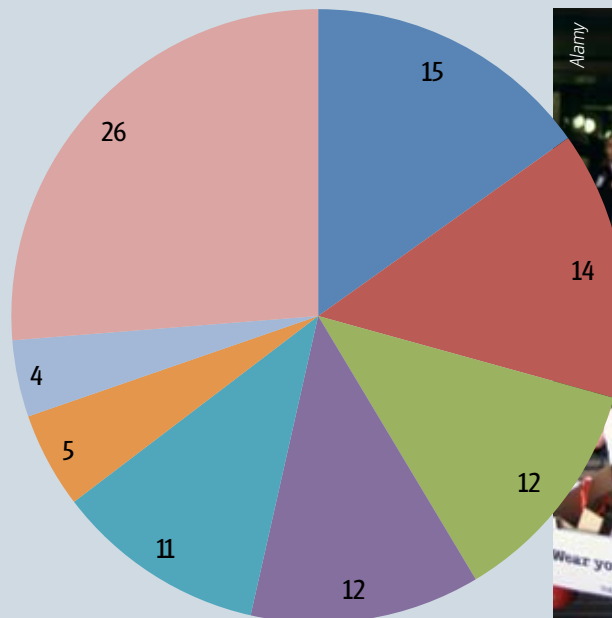
Charitable donations

- Religious
- Medical research
- Hospitals and hospices
- Overseas
- Children and young people
- Animals
- Education
- Other

£9.9bn

Of the £9.9 billion donated to charity in 2008-09, 15% was given to religious charities and 14% to medical research charities.

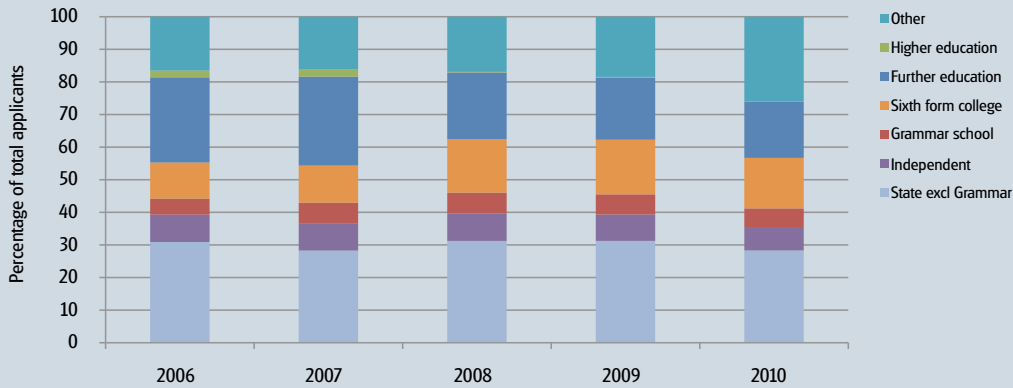
Source: ONS Social Trends



Note: Figures are rounded

Further education

Educational backgrounds of university applicants

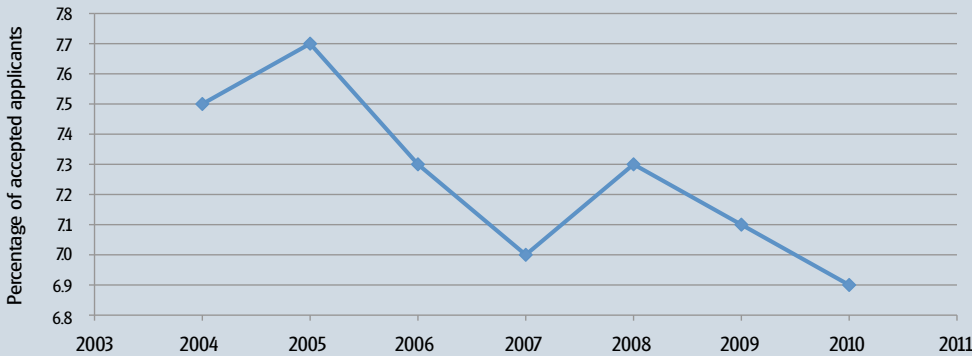


28.3%

7.2% of applicants to university came from independent schools in 2010 compared to 28.3% from comprehensive schools and 5.7% from grammar schools. The proportion applying from further education colleges fell from 26.1% in 2006 to 17.3% in 2010.

Source: Universities and Colleges Admissions Service (UCAS)

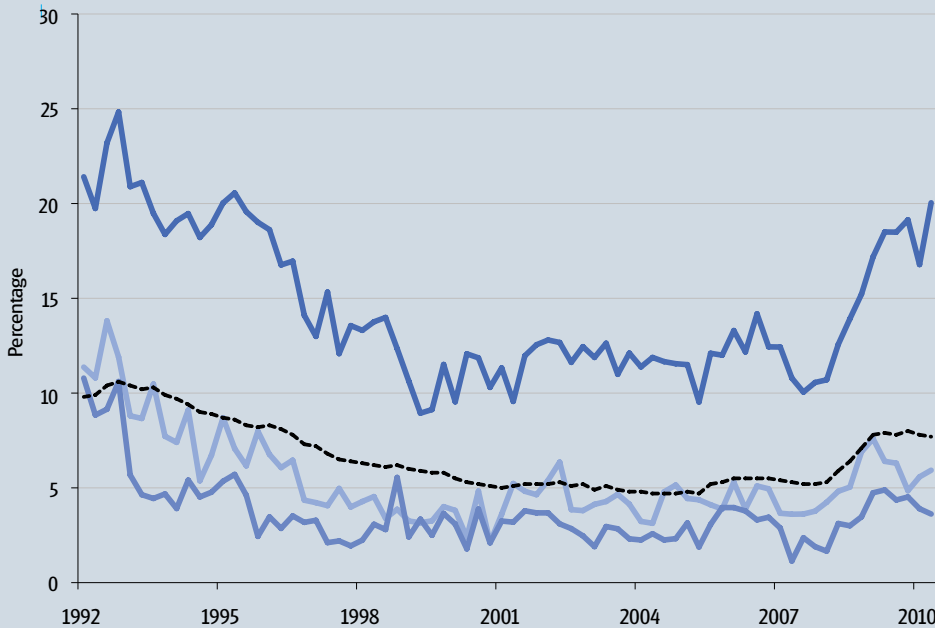
Gap years



6.9%

6.9% of students deferred entry by a year in 2010 compared to 7.5% in 2004. Source: UCAS

Graduate unemployment

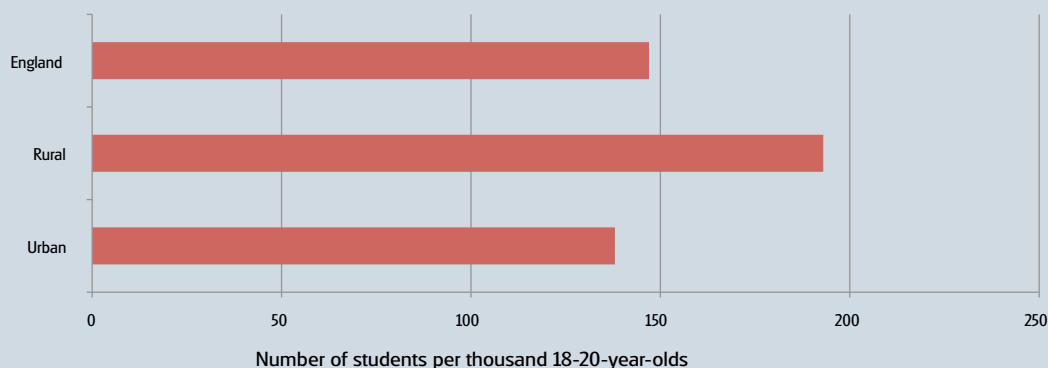


20%

Unemployment of those who graduated 0-2 years ago reached 20% in 2010 compared to 7.9% for all workers – its highest level since 1995. Source: ONS

— Graduated 0 to 2 years ago
 — Graduated 2 to 4 years ago
 — Graduated 4 to 6 years ago
 - - - UK average

University students in rural and urban areas

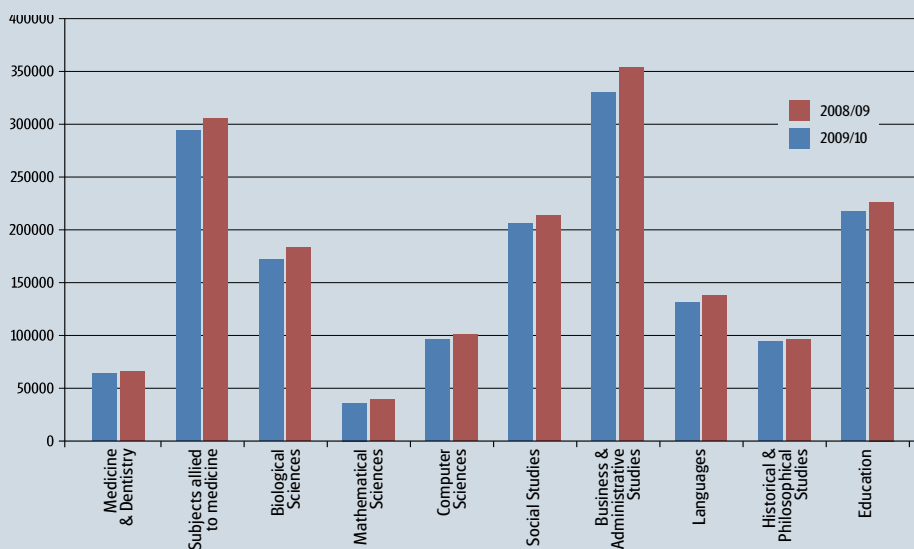


193

193 students per thousand went to university in English rural areas compared to 138 out of every thousand in urban areas.

Source: Department for Environment, Food and Rural Affairs (DEFRA)

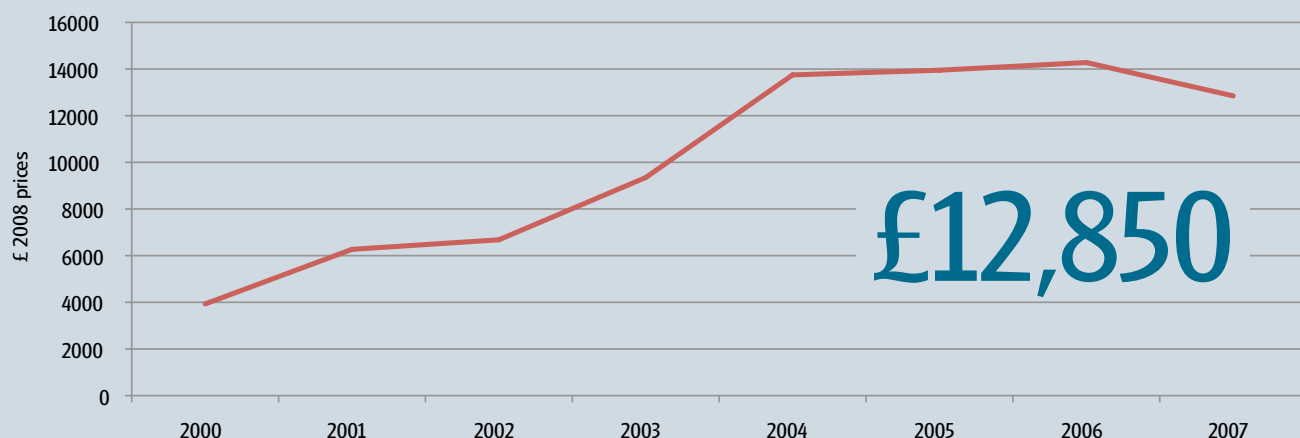
Student numbers by subject area



353,910

Business and Administrative Studies remains the most popular higher education subject by student numbers in 2010. Source: Higher Education Statistics Agency

Average debt of new graduates



£12,850

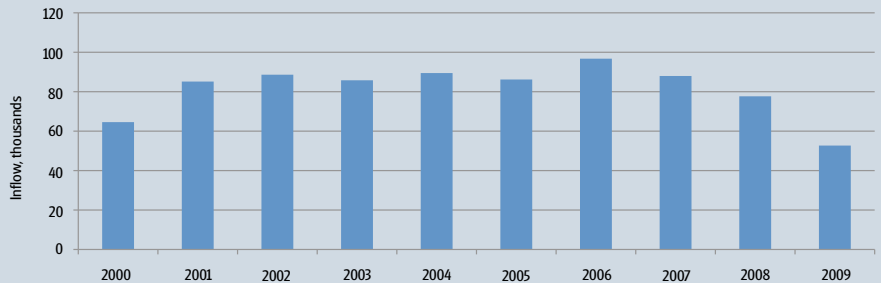
Average debt of new graduates has increased from £3,930 in 2000 to £12,850 in 2007. Source: Parliamentary Briefing Note

Skills and labour forces mobility

Inflows of foreign workers

53,000

In 2009, 53,000 foreign workers entered the UK, the lowest level for ten years. Source: Organisation for Economic Co-operation and Development (OECD)

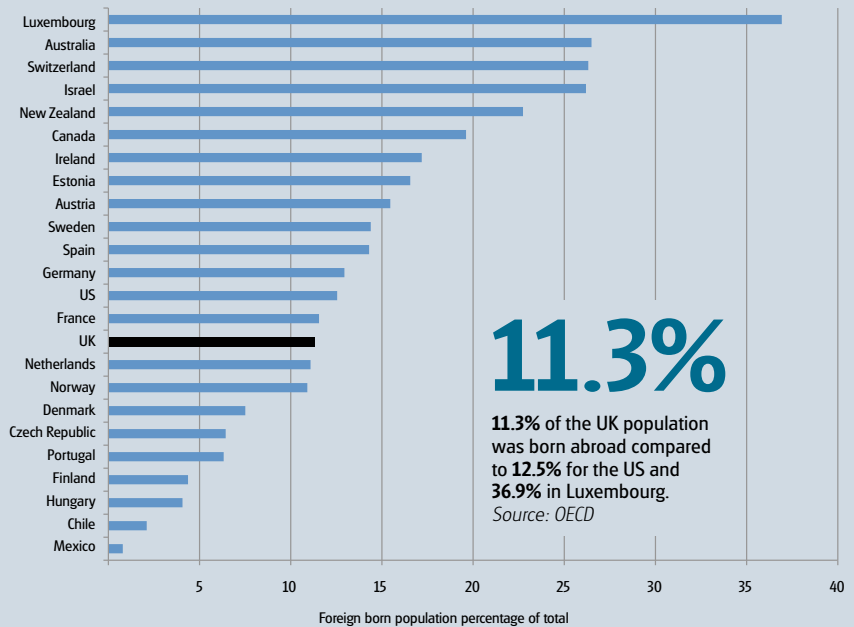


Performance in PISA tests 2009

SCIENCE		MATHS	
COUNTRY	RANK	COUNTRY	RANK
China (Shanghai)	1	China (Shanghai)	1
Finland	2	Finland	6
Netherlands	11	Netherlands	11
Germany	13	Germany	16
UK	16	France	22
US	23	UK	28
France	27	US	31

The UK was ranked 16th out of 65 developed and developing countries for the performance of its students in science; but performed worse in mathematics, coming 28th out of 65 countries. (PISA – Programme for International Student Assessment) Source: OECD

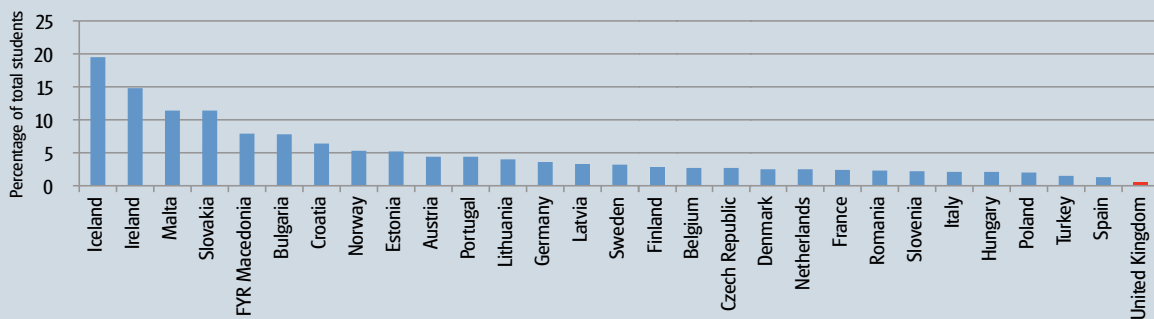
Stock of foreign born population 2009



11.3%

11.3% of the UK population was born abroad compared to 12.5% for the US and 36.9% in Luxembourg. Source: OECD

Students studying abroad

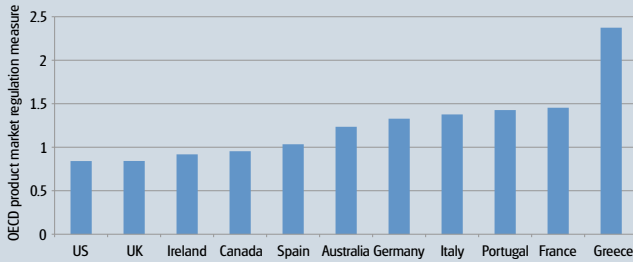


0.6%

UK students were the least likely to study abroad among EU countries. Only 0.6% of students studied abroad in 2009 compared to 2.4% of French students. Source: Eurostat

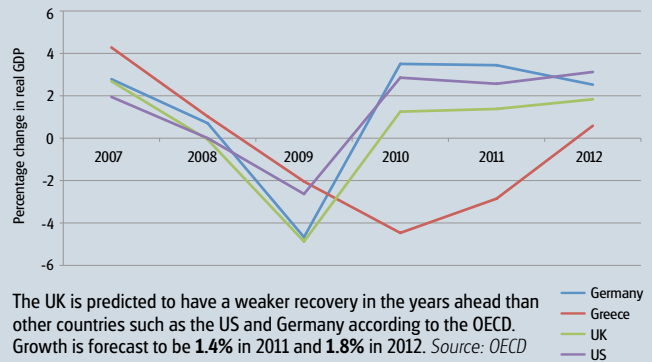
Growth

Product market regulation



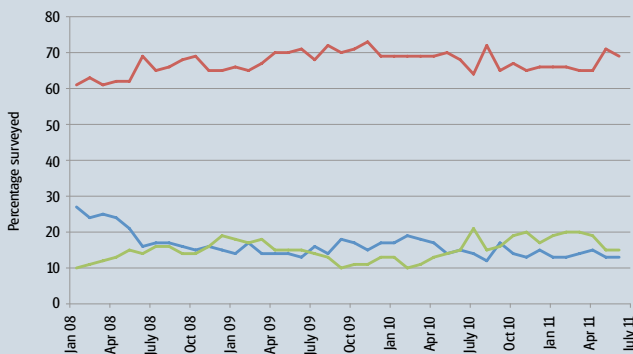
The UK had the second most relaxed product market regulations in the OECD in 2008. The US had the most relaxed regulations while Greece had the strictest. *Source: OECD*

Real GDP growth (with 2011-12 forecasts)



The UK is predicted to have a weaker recovery in the years ahead than other countries such as the US and Germany according to the OECD. Growth is forecast to be 1.4% in 2011 and 1.8% in 2012. *Source: OECD*

Consumer confidence 1

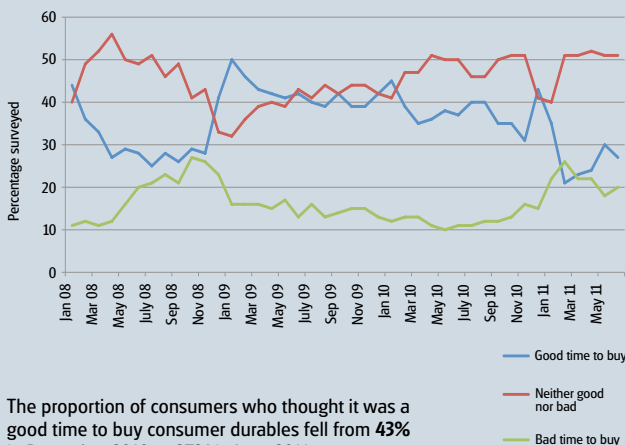


15%

In June 2011, 15% of consumers expected the economic and employment situation to be worse in six months, while 13% expected it to be better and 69% expected it to be the same.

Source: Nationwide Consumer Confidence Survey

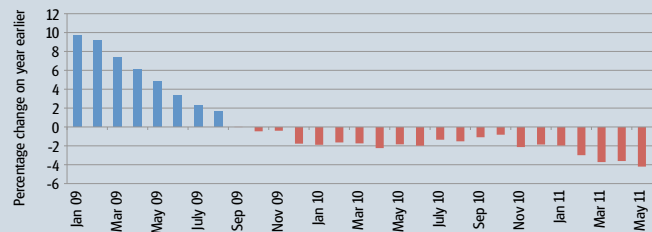
Consumer confidence 2



The proportion of consumers who thought it was a good time to buy consumer durables fell from 43% in December 2010 to 27% in June 2011.

Source: Nationwide Consumer Confidence Survey

Change in lending to SMEs

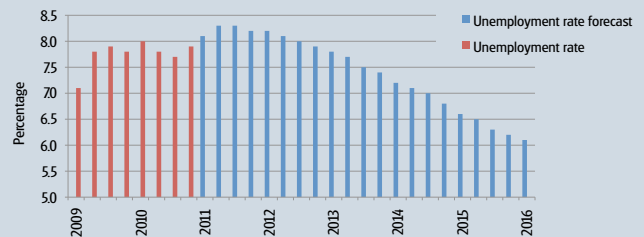


Net lending to small and medium-sized enterprises continued to fall relative to 2010. Net lending in May 2011 was 4.2% down on the year earlier.

Source: Bank of England



Unemployment rate



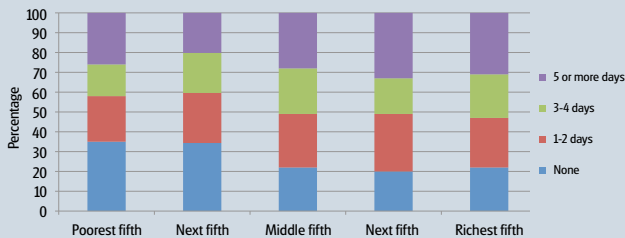
Unemployment is forecast by the Office for Budget Responsibility to peak at 8.3% in the third quarter of 2011 before declining to 6.1% in 2016.

Source: Office for Budget Responsibility

Thinkstock

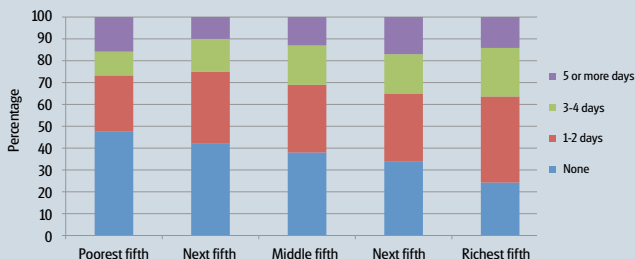
Wellbeing

Boys in sports by income group



42% Boys were more likely to participate in sports than girls. **42%** of boys from the poorest fifth of households played sports more than three times a week compared to **53%** of boys in the richest fifth. Source: The NHS Information Centre for Health and Social Care

Girls in sports by income group



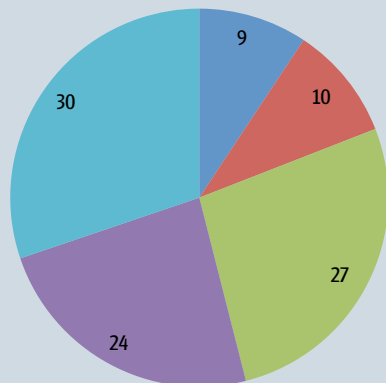
27% Young girls from poorer families were less likely to participate in sports. **27%** of those in the poorest fifth played sports more than three times a week compared with **36%** in the richest fifth. Source: The NHS Information Centre for Health and Social Care

Swimming proficiency

- Can't swim and scared of going into the water
- Can't swim but happy to go into the water
- Can swim (up to 25m)
- Can swim continuously for between 26m and 250m
- Can swim continuously for more than 250m

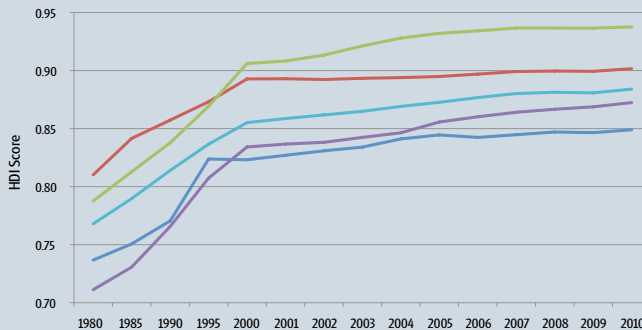
20%

In 2010, **20%** of those surveyed were unable to swim – half of whom were scared to go into the water altogether. **30%** were confident enough to swim for more than 250m. Source: Taking Part Survey



Note: Figures are rounded

Human development index



The UK's Human Development score puts the UK in **26th** position in the world for living standards according to the UN. The country with the highest HDI score is Norway. Source: United Nations Development Program



Thinkstock

General health

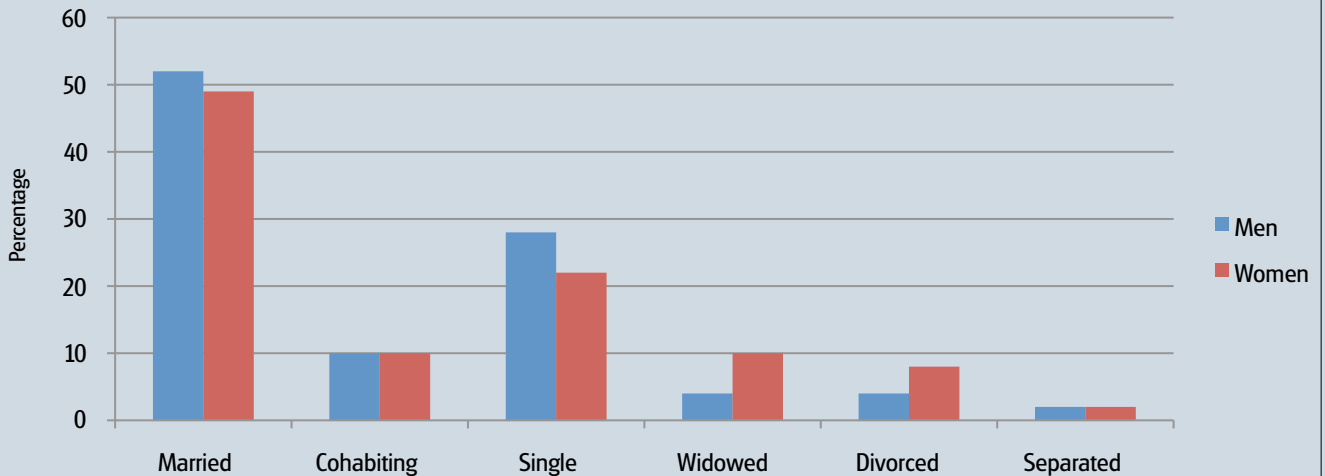


80%

Almost **80%** of respondents in Britain said they were in good or very good health. **6%** reported being in bad health. Source: ONS General Lifestyle Survey

People

Marital status



Roughly half of men and women over the age of 16 were married in 2009. 10% were non-married but cohabiting. Source: ONS General Lifestyle Survey

Civil partnerships

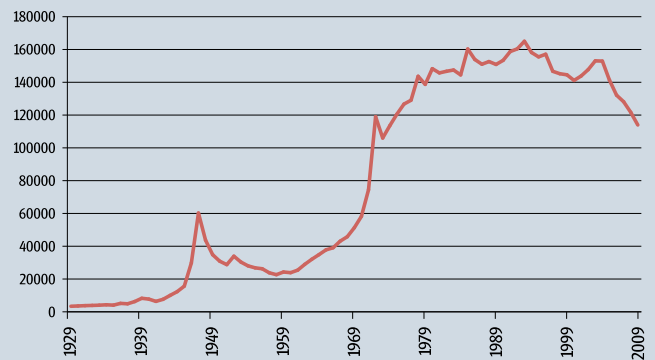


Provisionally, there were a total of 6,281 civil partnerships registered in the UK in 2009, a fall of 12.4% on the previous year, continuing the trend seen in 2007.

Source: Office for National Statistics, General Register Office for Scotland, Northern Ireland Statistics and Research Agency

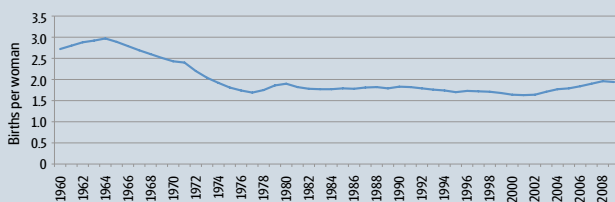
* In 2005 there were only 11 days in England and Wales and 12 days in Scotland on which couples could normally register a partnership.

Divorce rates



The number of divorces annually in England and Wales has risen from 3,396 in 1929 to 113,949 in 2009, reaching a peak in 1993 with 165,018. Source: ONS

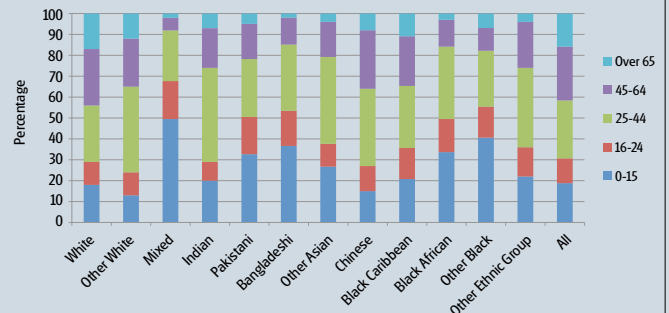
Fertility rate 1960-2009



1.9 children

The total fertility rate has declined from 2.7 children per woman in 1960 to just 1.9 children per woman in 2009. Source: OECD

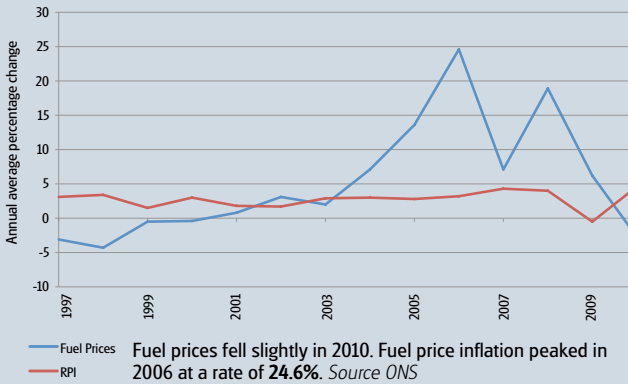
Age by ethnic group



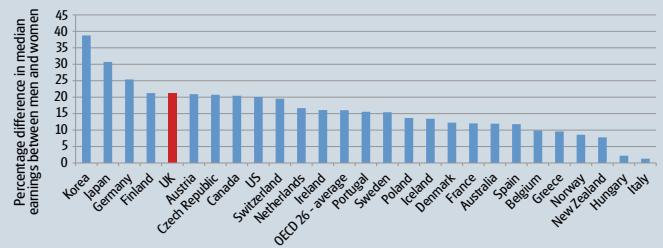
People from ethnic minorities tend to be younger on average than whites. In 2009, nearly 50% of those who are mixed race were 15 or younger. Whites are the most likely to be over the age of 65. Source: ONS General Lifestyle Survey

Household

Changes in fuel prices 1997-2010

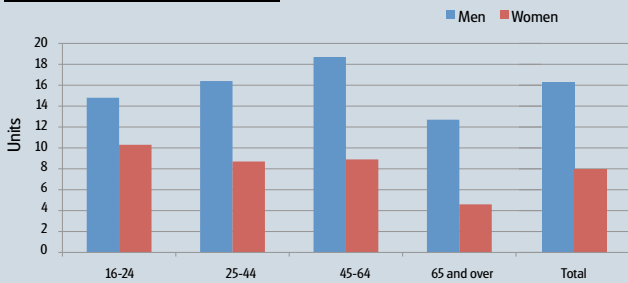


Gender pay gap



21% The gender pay gap in the UK in 2008 was the fifth largest in the OECD at **21%** of male median earnings. Source: OECD

Alcohol consumption



16 units



Men consumed **16** units of alcohol per week on average in 2009 compared to just **8** for women. Men aged 45-64 drank the most out of all groups. Source: ONS General Lifestyle Survey

Annual household waste in Britain

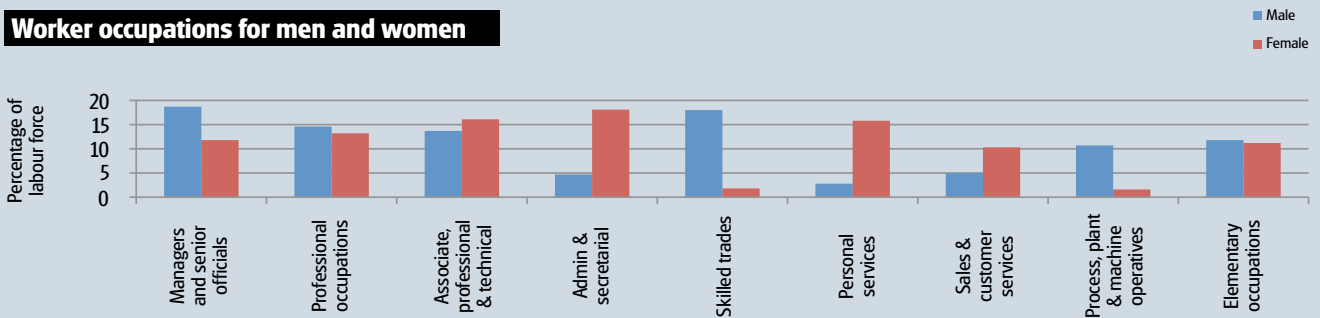


Waste recycled per person per year has gone from **52kg** in 2000 to **178kg** in 2008, more than a threefold increase. Source: DEFRA, Environment and Heritage Service, Scottish Environment Protection Agency (SEPA), Welsh Assembly Government (WAG)



Thinkstock

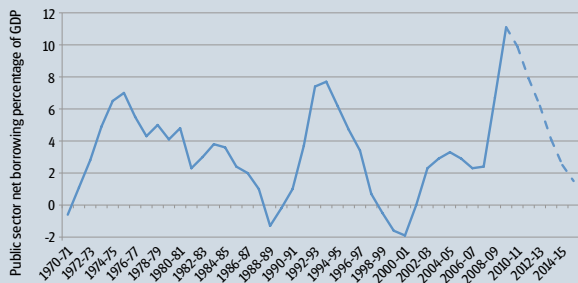
Worker occupations for men and women



Men were more likely to be managers and senior officials than in any other occupational group. The most important occupational group for women was administration and secretarial positions in which **18%** of women worked. Source: ONS Labour Force Survey

Public finances

Public sector deficits since 1970

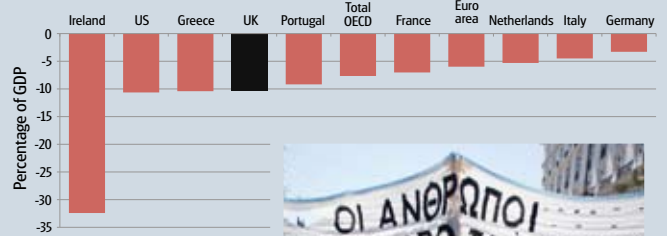


11.1%

— Outturns
- - - Forecasts

The government's deficit in 2009-10 was **11.1%** of GDP – the largest since 1993-94. The Office for Budget Responsibility expects the deficit to decline to **1.5%** of GDP by 2014-15. *Source: Office for Budget Responsibility*

Public sector deficits

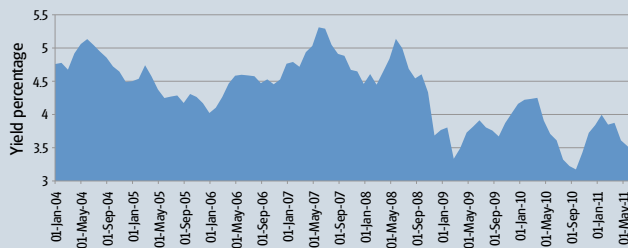


The UK had a larger budget deficit than many other developed countries in 2010. The UK deficit was not as large as those in Greece, Ireland or the US.

Source: OECD



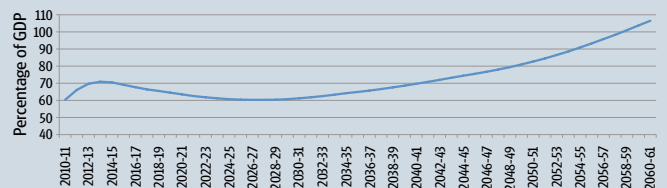
Government bond yields



3.4%

Government bond yields are low by historical standards. Yields on 10-year nominal, zero-coupon bonds stood at **3.4%** in July 2011 compared to a peak of **5.3%** in June 2007. *Source: Bank of England*

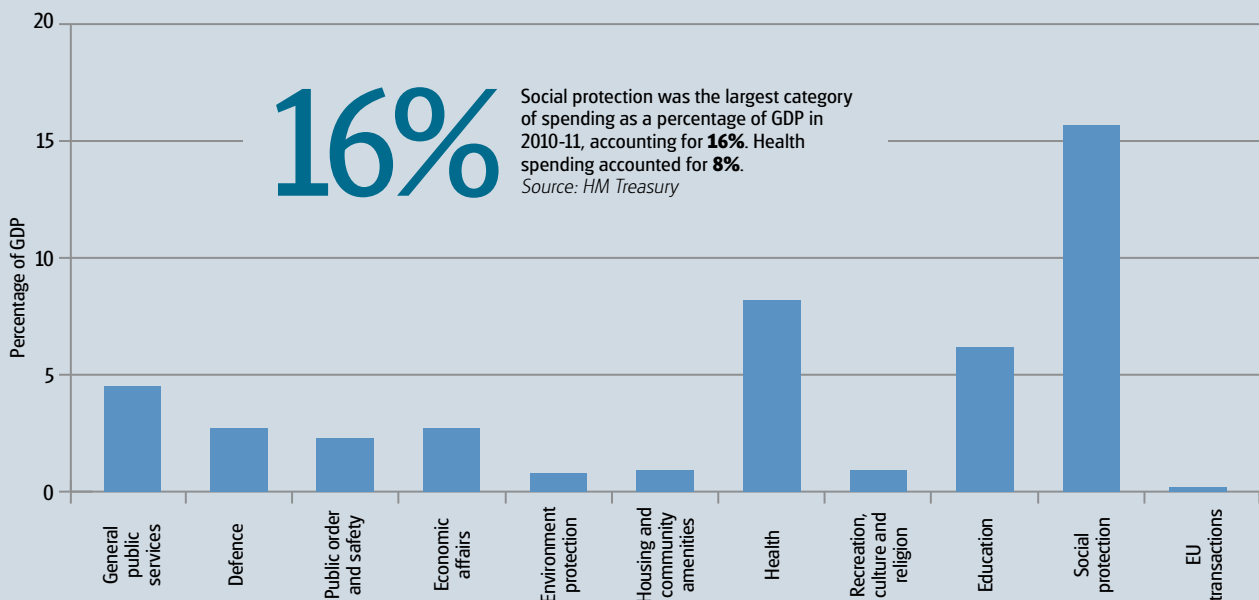
Public sector net debt forecast



100%

The Office for Budget Responsibility's long-term fiscal forecasts predict that debt will exceed **100%** of GDP by 2058 under current policies. *Source: Office for Budget Responsibility*

Public spending



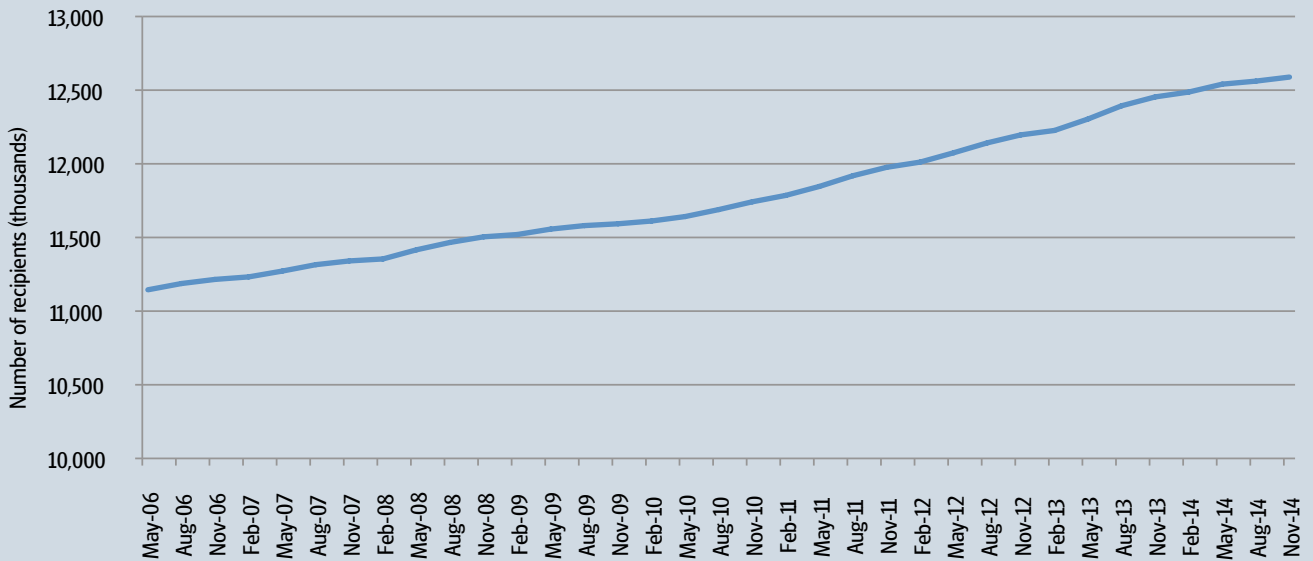
16%

Social protection was the largest category of spending as a percentage of GDP in 2010-11, accounting for **16%**. Health spending accounted for **8%**. *Source: HM Treasury*

PA Photos

Pensions

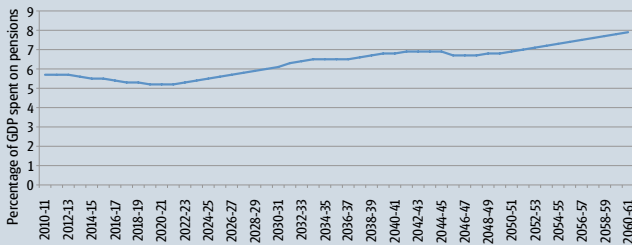
State pension recipients



12.6 million

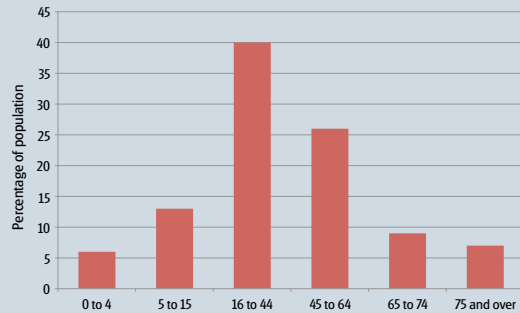
The number of state pension recipients has climbed steadily and will reach **12.6 million** in 2014. *Source: Department for Work and Pensions*

Pension spending projection



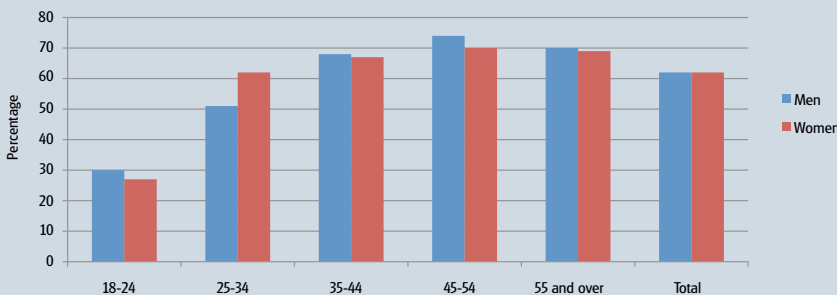
7.9% Spending on pensions is expected to rise from **5.7%** of GDP in 2010-11 to **7.9%** by 2060-61 according to the Office for Budget Responsibility's long-term fiscal forecasts. *Source: Office for Budget Responsibility*

Age distribution of the population



7% of the UK population was over the age of 75 in 2009. *Source: ONS*

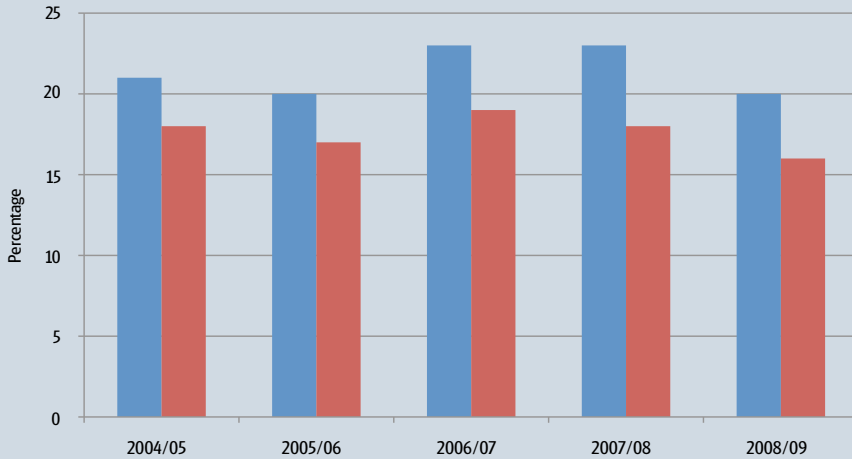
Full-time workers in pension schemes



62%

62% of full-time workers were covered by occupational pension schemes in 2009. Only **30%** of full-time men and **27%** of full-time women aged 18-24 were enrolled in pension schemes. *Source: ONS General Lifestyle survey*

Pensioners living in poverty

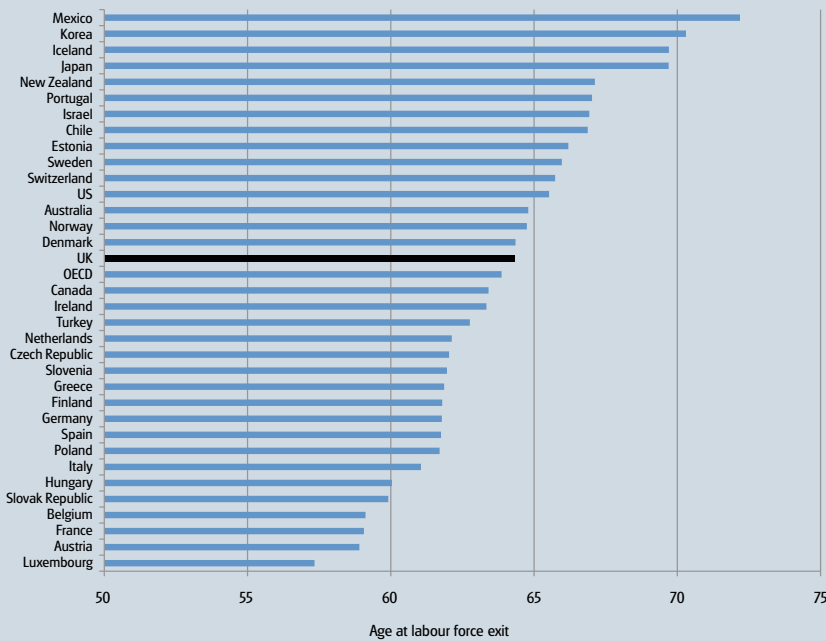


20%

20% of English pensioners lived in poverty (before housing costs) in 2008/09. Source: ONS

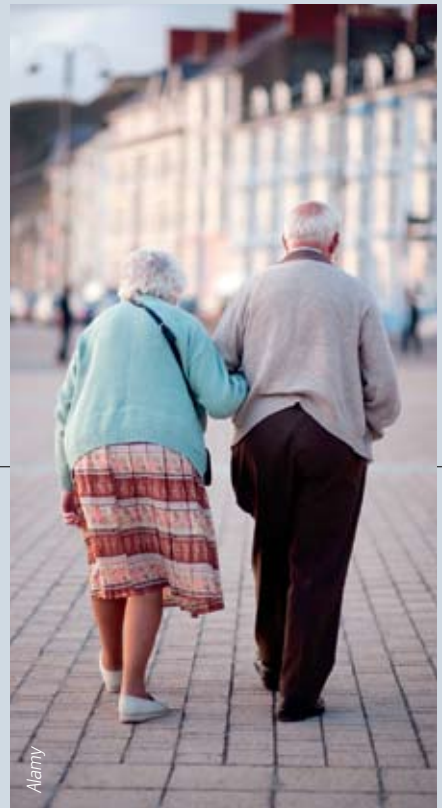
■ Before housing costs
■ After housing costs

Average age of retirement

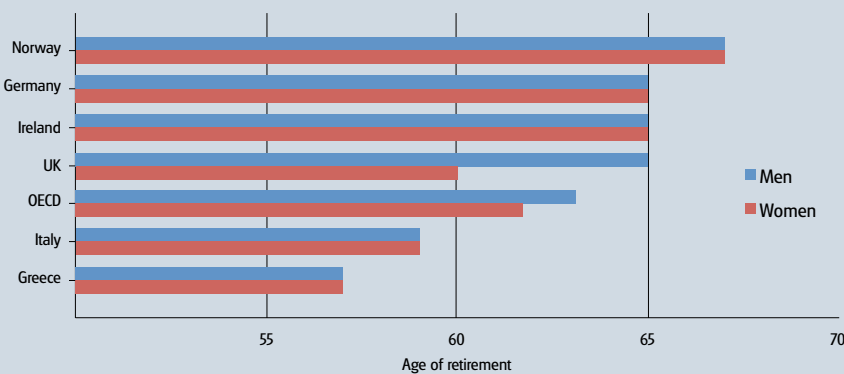


64.3 years

In 2010, the average age at labour force exit in the UK was 64.3 years, placing it 16th out of 35 countries. Source: OECD



Retirement ages



The UK retirement age is slightly higher than the OECD average for men and slightly lower for women. The retirement age in Norway is the highest in the OECD at 67 for both men and women. Source: OECD