



DIAMOND



ND

Showcasing event – Interdisciplinary Partnerships in Horizon 2020

Embedding Social Science, Arts and Humanities across H2020 - UKRI ESRC November 2020

Lucía Recio – lucia.recio@eurecat.org
Project Manager DIAMOND Project

Dr Yvonne Hail - yvonne.hail@stir.ac.uk
Social Science Research - University of Stirling





- 1 ABOUT DIAMOND
- 2 DIAMOND – An interdisciplinary research and partnership example
- 3 Key challenges of interdisciplinary partnership – barriers and lesson learned
- 4 The Key Benefits of Interdisciplinary Research Consortiums
- 5 The Impact and Value of Social Scientists in DIAMOND



ABOUT DIAMOND



Revealing fair data and actionable knowledge from data for making transport more gender equal for users and those working in the sector

- European project funded under the topic: MG-4-3-2018 - *Demographic change and participation of women in transport*
- **3 years** duration, from 1/11/2018 to 31/10/2021
- **Budget: 2,6 M€**
- **14 participants** from **7 different countries**
- **Coordinated by Eurecat, RTO, ES**
- **Grant agreement ID: 824326**



USE CASES



Validation in four specific public and private transport sectors scenarios



Railways and public multimodal transport



Automated vehicles



Vehicle sharing



Corporate social responsibility and employment



DIAMOND – An interdisciplinary research and partnership example



Social & Psychology experts



UNIVERSITY OF STIRLING



UNIVERSITY OF BELGRADE



Scientific and technology experts



INSTITUTO DE BIOMECÁNICA DE VALENCIA

Stakeholders associations



WOMEN AND VEHICLES IN EUROPE

Service providers- transports authorities



PUBLIC TRANSPORT AUTHORITY OF WARSAW



AUTOLIB' VELIS' METROPOLE



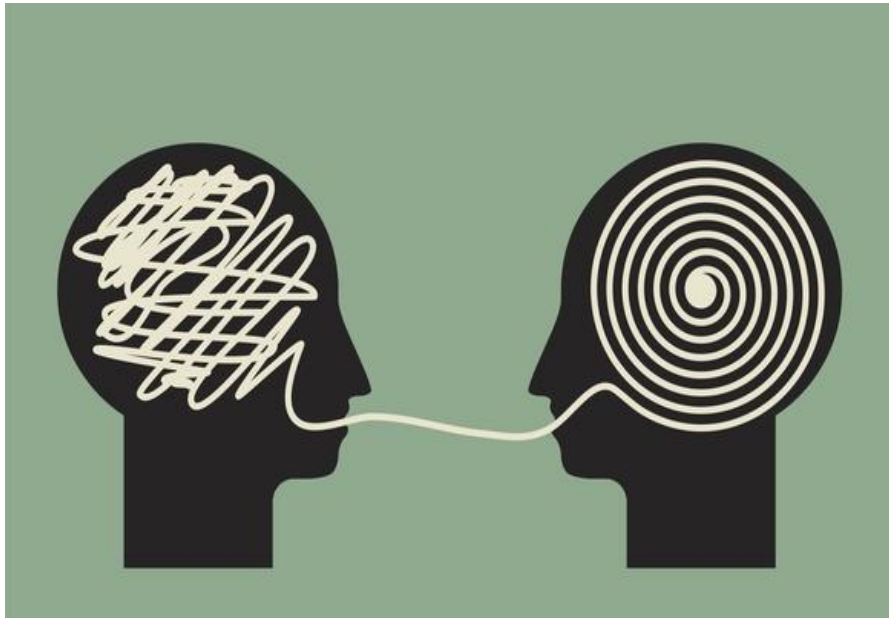
Ferrocarrils de la Generalitat de Catalunya



Key challenges of interdisciplinary partnership



Barriers of interdisciplinary team



- Cultural and “language” differences between disciplines
- Lack of understanding of value of other disciplines
- It took us a long time to have a gelled team
- Lacking cohesion led to frictions that delayed the project progressing and create frustrations between partners

Key challenges of interdisciplinary partnership



Lesson learned



- Need to ensure that whole team focuses on the same project and objectives
- Communication are key in the process
- Working together for planning and independently during execution of the project. Including an exhaustive follow-up of the tasks by the coordinator.
- Partners helping each other understanding the diverse perspectives of each one.



The Key Benefits of Interdisciplinary Research Consortiums

‘Production of research which crosses disciplinary boundaries’.

Academic disciplines are in the main flexible and have frequently combined to provide more robust answers to emerging questions.

There has been an increase more recently in collaboration between distant disciplines, for example between natural and social sciences.

These collaborations do not only involve academics, but policy makers and other stakeholders may be involved in a variety of ways.

Stakeholders can co-define research problems from an insiders perspective and actively participate in data collection and scientific experiments (as they have in DIAMOND)

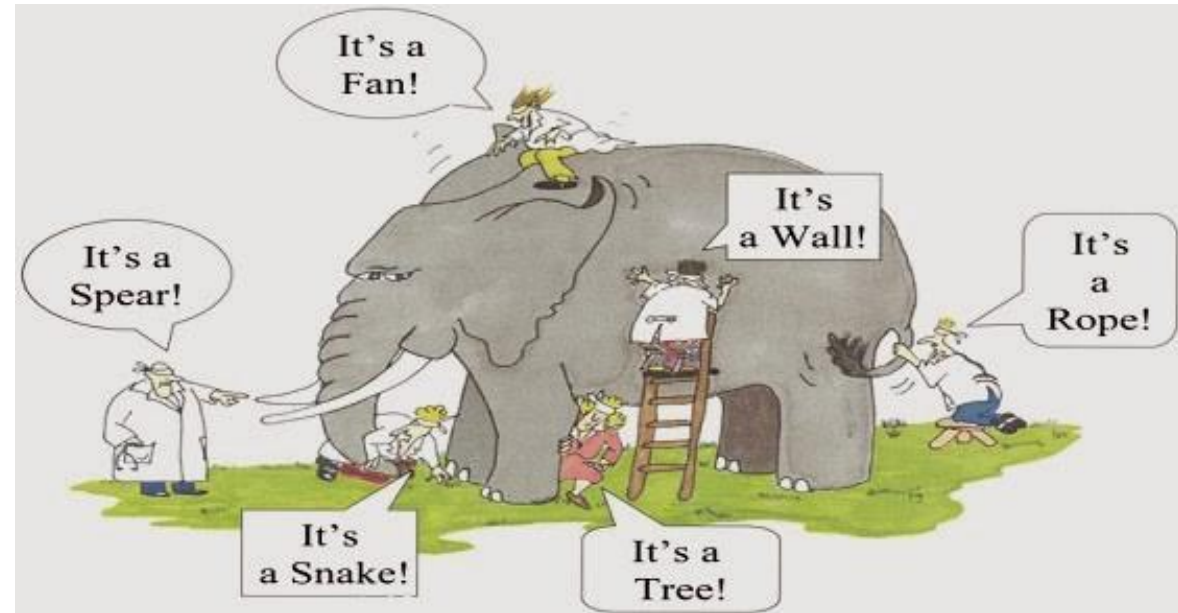


The Key Benefits of Interdisciplinary Research Consortiums



In the beginning

- Our research brings us into contact with people in diverse fields, from engineering science, to data science and data analytics to environmental sustainability and applied Intelligence research
- Holistic and robust
- “Two heads are better than one”
- Developing new and innovative approaches
- Industry Partners supports positive buy in



The Impact and Value of Social Scientists in DIAMOND



- Humanities and social science research generates important new knowledge that is fundamental to broader societal issues in the world.
- A view of complex social issues and problems taking account of local social, cultural and political contexts
- Social Sciences investigate the processes that govern the behaviours of **individuals** and **groups**.
- And in the main can be categorised into three distinct units of analysis—**individuals** (cognitive and social psychologists), **communities** (sociologists), and **institutions** (political scientists).
- Whilst also taking account of important demographic changes therefore providing robust evidence to support developing decision making



Promoting the value of interdisciplinary research and partnerships



How can interdisciplinary projects increase impact?

Industry as partners supports stakeholder engagement in the generation of impact

Cross discipline dissemination

Creation of new networks



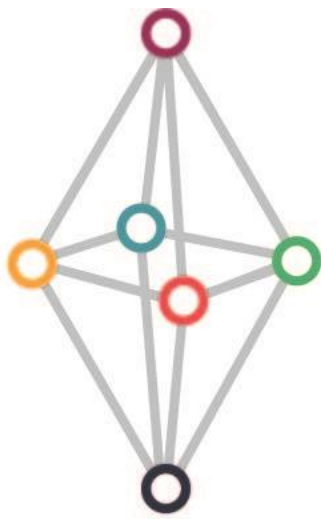


Recommendations for efficient collaboration

- Be patient
- Work hard during proposal phase to ensure that the elements that must be in place before interdisciplinary collaboration are well defined and everyone does agree.
- To have an open mind to other disciplines
- Good attitude – enjoy the project!



DIAMOND



Thank you!



UNIVERSITY OF STIRLING



Edinburgh Napier UNIVERSITY



PUBLIC TRANSPORT AUTHORITY OF WARSAW



INSTITUTO DE BIOMECAÁNICA DE VALENCIA



WOMEN AND VEHICLES IN EUROPE

